

Sigma 150-600mm F5-6.3 DG OS HSM

Compatible cameras: NIKON , CANON

Made In JAPAN

Retail Price: TK. 1,50,000.00, Offer Price: TK. 1,40,000.00

Covering all the essence. Portable, durable and of a high-standard –
A Masterpiece of hyper-telephoto zoom lens.

Specifications

Lens construction : 24 elements in 16 groups

Angle of view (35mm format) :16.4° - 4.1°

Number of blades in diaphragm :9 (rounded diaphragm)

Minimum aperture :F22

Minimum focusing distance :260cm / 102.4in

Maximum magnification :1 : 5

Filter size :Ø105mm

Diameter x length :Ø121mm x 290.2mm/4.8in. x 11.4in.

Weight :2,860g/100.9oz.

Accessories: Case, Cover Hood (LH1164-01), Shoulder Strap supplied.

Corresponding AF Mounts: SIGMA / NIKON / CANON

Flora Limited is the only authorized distributor of SIGMA Products in Bangladesh

Contact:

Mayeen Ahmed

Product Manager (Nikon Sigma, Velbon, Marumi & Olympus)

Cell: +88 01711 827339

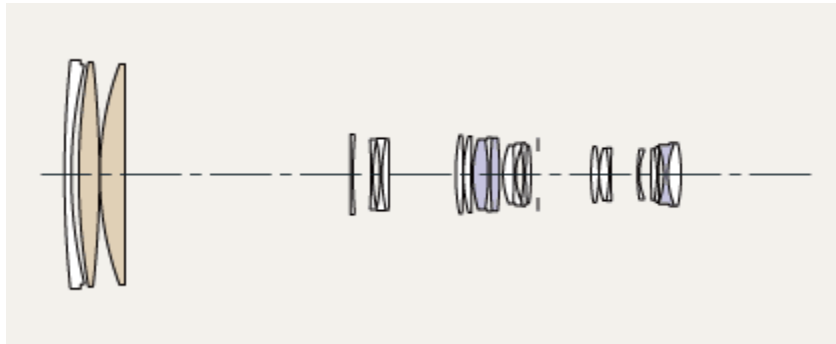


【付属フード LH1164-01】

OS | HSM | RF | CONV

Covering all the essence. Portable, durable and of a high-standard –
A Masterpiece of hyper-telephoto zoom lens.

Lens Construction



■ FLD glass

■ SLD glass

Specifications

Lens construction : 24 elements in 16 groups

Angle of view (35mm format) :16.4° - 4.1°

Number of blades in diaphragm :9 (rounded diaphragm)

Minimum aperture :F22

Minimum focusing distance :260cm / 102.4in

Maximum magnification :1 : 5

Filter size :Ø105mm

Diameter x length :Ø121mm x 290.2mm/4.8in. x 11.4in.

Weight :2,860g/100.9oz.

Accessories: Case, Cover Hood (LH1164-01), Shoulder Strap supplied.

Corresponding AF Mounts: SIGMA / NIKON / CANON

Nikon mounts do not have an aperture ring. Some functions may not work depending on the camera model.

This lens cannot be used with film SLR cameras with the exception of the Nikon F6 and Canon EOS-1v.

The angle of view varies depending on which camera the lens is mounted on.

Appearance and specifications are subject to change without notice.

Dust and splash-proof, zoom lock at every focus distance, water-repellent coating, compatibility with the new tele converters, new OS system with accelerometer, easily accessible manual over-ride switch, optimized auto focusing, telephoto shooting at 600mm, minimized chromatic aberration for higher optical performance and enhanced enjoyment with beautiful build quality. Since telephoto zoom lenses are often used under very challenging situations, this model has crystalized all the possible qualities and features to achieve the best optical and action-capture performance. While combining high portability and durability, this high-performance hyper-telephoto zoom lens from our Sports line offers outstanding rendering capabilities. Its versatility

provides better flexibility for wider shooting scenes, and the high-performance definitely stimulates photographers' artistic expression.

1. Achieves the best optical performance that embodies the product concept of our Sports line.

By incorporating excellent optical glass elements, it minimizes chromatic aberration and achieves class leading image quality.

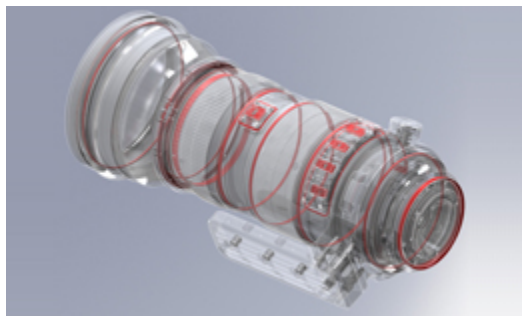
This lens incorporates 2 FLD (“F” Low Dispersion) glass elements, which have performance equal to fluorite, and 3 SLD (Special Low Dispersion) glass elements, and compensates for color aberration at the utmost. Chromatic aberration in particular, which could be visible especially towards the telephoto-end even when stopped down, is corrected by the optimized design of glass elements including FLD lenses.

※ FLD

ガラスとは、従来のガラスと比べて屈折率と分散性が極めて小さく、異常分散性が高いといった蛍石と同等の性能を持つ、透過性に優れた最高水準の超低分散ガラスです。この性質を利用して、従来のレンズでは取り除くことができなかった残存色収差=二次スペクトルを徹底的に除去し、極めてシャープでコントラストの高い優れた描写を実現しています。

2. High-end model with enhanced durability.

Dust-proof and splash-proof construction



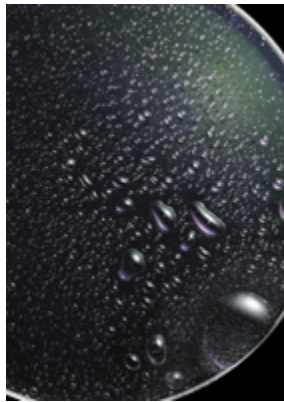
It is Dust and splash-proof, and designed for higher durability. It is able to meet the demands that professional photographers would require in challenging shooting conditions, such as in the rain.

Zoom lock switch can be set at any focal length

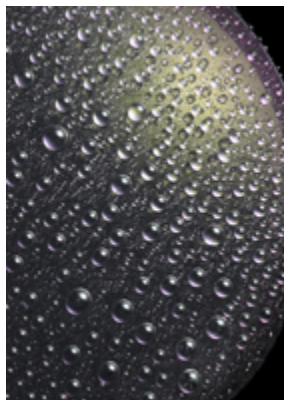


The new zoom lock switch enables the zoom ring to be locked at any focal length. It can be fixed at the photographer's desirable focal length, which allows stable shooting whether the lens is positioned upward or downward. It also helps during long exposure photography.

Water and oil-repellent coating ensures pleasant photography experience



Without Coating



With Coating

Forefront and rear lenses incorporate a water and oil-repellent coating that allows water to be wiped away easily and prevents oil and fat from sticking to the surface, even in challenging shooting conditions. At the same time, the maintenance of the lens surface becomes easier.

Manual override incorporated to make two full-time manual modes switchable.



In addition to AF/MF, MO (Manual Override) is incorporated as one of the options of the focus mode switch. By setting it to the MO position, it switches to manual focus by rotating the focus ring even during continuous AF. With AF position, standard full-time manual focus is available. Using the optional SIGMA USB DOCK, it is possible to adjust the MO position's sensitivity to switch to manual focus.

Newly designed tripod socket enables desirable fixing



The tripod socket is newly designed since hyper-telephoto zoom lenses like this one which has 600mm telephoto-end often need a monopod or tripod for shooting. While ensuring that the tripod socket is large and stable, it's possible to click the position at every 90° to make the change of shooting position from and to vertical and horizontal much easier. By attaching the supplied strap, the lens can be carried safely without putting unnecessary pressure on the mount of the camera.

* Tripod socket cannot be detached from the lens

Offering excellent usability as a straight zoom



This lens is optimized to allow the lens front to expand/contract smoothly in order to immediately adopt without adjusting the holding position, even to a sudden change in angle-of-view. The lens front is designed to ensure easy handling in such situations.

3. High action-capture performance that enables any photographer with high demands to get the exact shots they want.

Accelerometer enables panning photography both in vertical and horizontal position

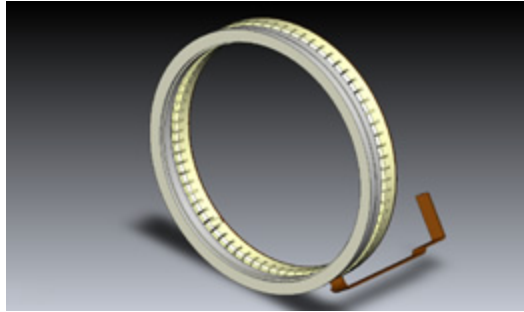


The OS (Optical Stabilizer) function using an accelerometer has been incorporated to ensure high accuracy. OS Mode 1 is suitable for general photography, and Mode 2 is ideal for panning shooting for motor sports etc. With Mode 2, the accelerometer works effectively to minimize blur while shooting by detecting whether the camera is positioned vertically or horizontally.

* This lens cannot be used on film SLR cameras with the exception of the Nikon F6, Canon EOS-1V.

* Effect of Mode 2 is limited to panning shooting in horizontal direction.

Quieter and Faster “Optimized AF”



HSM (Hyper Sonic Motor)

The HSM (Hyper Sonic Motor) ensures high speed and quiet AF. With the further enhanced AF algorithm compared to previous models, continuous AF (AF-C) improves the focusing efficiency by approximately 5%.

4. Customization and flexible adjustment for convenience or a specific purpose is possible.

SIGMA USB DOCK - Customizable to your needs



Customization including firmware updates, focus adjustment, setting of full time manual operations as well as adjustment of the timing to switch to MF when rotating the focus ring is available with the optional SIGMA USB DOCK, by connecting it with the dedicated software “SIGMA Optimization Pro” on a computer. With this lens, custom mode that can be set depending on the photography situation is available by switching it on the lens. Through custom mode, it is possible to set AF speed, focus limiter where desired focus range can be adjusted, and OS where one of the patterns for optical stabilizer can be selected from “Dynamic View Mode”, “Standard” and “Moderate View Mode”.

5. Compatible with the newly developed tele converters.

AF is effective up to F8



SIGMA TELE
CONVERTER TC-1401



SIGMA TELE
CONVERTER TC-2001

Tele Converters that are newly designed to match the new lens line-ups (optional, planned to be released in 2014) can be attached. The addition of SIGMA's TELE CONVERTER TC-1401 or TELE CONVERTER TC-2001 produces a MF 210-840mm F7-9 hyper-telephoto zoom lens or a MF 300-1200mm F10-12.6 hyper-telephoto zoom lens respectively. In addition, when SIGMA TELE CONVERTER TC-1401 is attached to cameras that are compatible with AF at F8, it is possible to shoot with AF.

* When shooting subjects with low contrast or luminosity value, focus may not be spot on the subject.

[Tele Converter matching list](#) 

6. New product lines from SGV concepts are setting new benchmarks for image quality.

[Sports]

Sophisticated optical performance and expressiveness

High action-capture performance, enabling photographers to get the exact shots they want.

SIGMA is organizing all its interchangeable lenses into three product lines; Contemporary, Art, and Sports. While offering sophisticated optical performance and expressiveness, our Sports line lenses deliver high action-capture performance, enabling photographers to get the exact shots they want. With these lenses, fast-moving subjects even at distance can be well captured. This high-performance line also offers a variety of functions to aid the photographer in challenging conditions and scenarios. Besides sports photography, these lenses are also perfect for nature shots featuring birds and wildlife, as well as aero photography, trains, motor sports photography and portraits. Another major feature of our Sports line lenses is their wide range of customization options: using the dedicated software, all sorts of settings can be tailored to the personal preferences of the photographer.

[SIGMA GLOBAL VISION]

SIGMA Global Vision” - SIGMA is working on its full renewal of the products, and the new lens lines share all the following elements.

Evaluation with SIGMA’s own MTF measuring system “A1”



46-megapixel Foveon direct image sensor

We used to measure lens performance with an MTF measuring system using conventional sensors. However, we’ve now developed our own proprietary MTF (modulation transfer function) measuring system (A1) using 46-megapixel Foveon direct image sensors. Even previously undetectable high-frequency details are now within the scope of our quality control inspections. The SIGMA 150-600mm F5-6.3 DG OS HSM will all be checked using this “A1” before they are shipped.

* A1: Aizu 1

“Made in Japan” with the best craftsmanship

All Sigma's manufacturing – right down to the molds and parts – is carried out under an integrated production system, entirely in Japan. We are now one of the very few manufacturers whose products are solely "made in Japan". We like to think our products are somehow imbued with the essence of our homeland, blessed as it is with clean air and water, and focused hard-working people. We pride ourselves on the authentic quality of Sigma products, born of a marriage between highly attuned expertise and intelligent, advanced technology. Our sophisticated products have satisfied professionals and lovers of photography all over the world, because our manufacturing is based on genuine craftsmanship, underpinned by the passion and pride of our experts.

Applicable for the Mount Conversion Service that enables lenses to be long term assets



Over the years, Sigma has manufactured an extremely wide variety of interchangeable lenses. Leveraging our unique know-how and resources, we present our new mount conversion service, which is available for the interchangeable lenses from our new product lines. Sigma will convert the current lens mount internal components, allowing you to continue using your favorite Sigma lens with a different camera body. Thanks to this service, you can use a favorite lens for many years to come, unrestricted by your original choice of camera system.

Note: Sigma's mount conversion service differs from ordinary repairs and product support and is not offered at your local Sigma dealer or camera store. In order to apply for the service, please contact your nearest authorized subsidiary/ distributor of Sigma.

Brass made bayonet mount



This lens incorporates a brass bayonet mount which has both high accuracy and durability. A special treatment to reinforce its strength is applied to the surface giving it greater strength and making it highly resistant to long-term use.

Designed to minimize flare and ghosting



With Super Multi-Layer Coating



No Super Multi-Layer Coating

SIGMA's Super Multi-Layer Coating reduces flare and ghosting. It provides sharp and high contrast images throughout the entire zoom range.

Incorporating Rounded Diaphragm



The 9 blade-rounded diaphragm creates an attractive blur to the out-of-focus areas of the image.